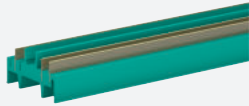


# Insert for DIN Mounting Rail

## UPR-INS-03



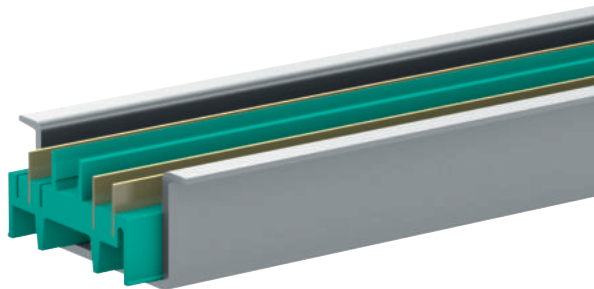
- 3-conductor insert in 35 mm DIN mounting rail
- Suitable for 35 mm DIN mounting rail UPR-MR
- Suitable for profile rail K-DUCT
- Standard length 2 m (6 foot), simple to customize to application space

Insert for 35 mm DIN mounting rail

### Function

The insert consists of plastic and has integrated gold-plated conductors. The insert is installed into the DIN mounting rail UPR-MR. The component has two conductors for power and one conductor for collective error messaging. The component comes in 2 m segments but can be cut to any size. The DIN mounting rail UPR-MR and the insert UPR-INS-\*\* form the Power Rail.

### Assembly



Release date: 2023-05-05 Date of issue: 2023-05-05 Filename: 258157\_eng.pdf

Refer to "General Notes Relating to Pepperl+Fuchs Product Information".

Pepperl+Fuchs Group  
www.pepperl-fuchs.com

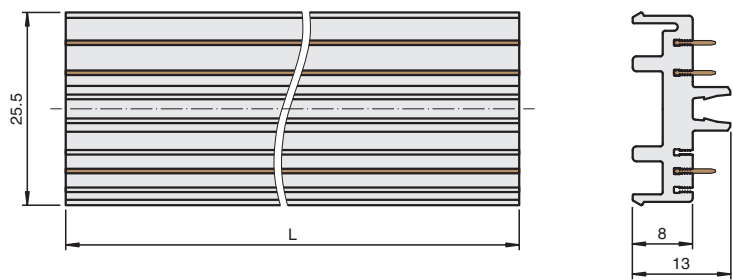
USA: +1 330 486 0002  
pa-info@us.pepperl-fuchs.com

Germany: +49 621 776 2222  
pa-info@de.pepperl-fuchs.com

Singapore: +65 6779 9091  
pa-info@sg.pepperl-fuchs.com

 **PEPPERL+FUCHS**



Dimensions



Technical Data

<b>Ambient conditions</b>		
Ambient temperature		-40 ... 70 °C (-40 ... 158 °F)
<b>Mechanical specifications</b>		
Connection		3 conductors
Supply		2 Conductors
Fault output		1 Conductors
Material		Polycarbonate
Mass		approx. 440 g
Dimensions		25.5 x 13 x 2000 mm (1 x 0.5 x 78.7 inch) (W x H x L)
Mounting		in 35 mm DIN mounting rail acc. to EN 60715:2001 Height: 15 mm

Accessories

	<b>UPR-E</b>	End cap for universal power rail UPR-**-*
	<b>UPR-COVER</b>	Cover for 35 mm DIN mounting rail

Release date: 2023-05-05 Date of issue: 2023-05-05 Filename: 258157\_eng.pdf